

**GENERAL NOTES**

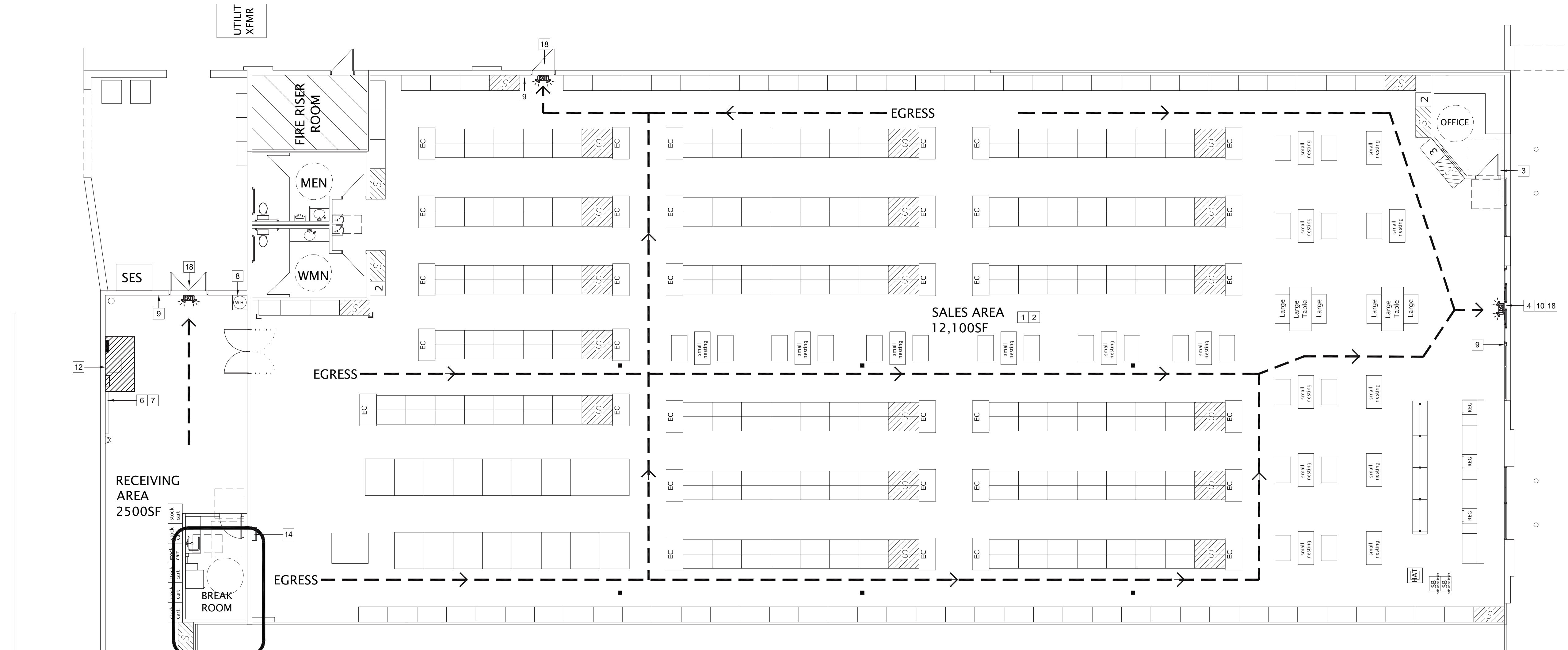
- A. ALL EXTERIOR WALLS TO HAVE A MINIMUM OF R15 INSULATION VALUE, WITH VAPOR BARRIER
- B. VERIFY INTERIOR AND EXTERIOR DIMENSIONS, NOTIFY ARCHITECT IMMEDIATELY WITH DISCREPANCIES.
- C. REFER TO DOOR SCHEDULE AND FINISH KEY.
- D. DIMENSIONS SHOWN ARE CLEAR DIMENSIONS GYP BD TO GYP BD.
- E. WRITTEN DIMENSIONS TAKE PRECEDENCE OVER SCALING ON THE CONSTRUCTION DOCUMENTS. DO NOT SCALE.
- F. GC TO INSTALL CORNER GUARDS ON ANY EXPOSED OUTSIDE CORNERS, NOT COVERED IN WAINSCOT OR PLYWOOD INCLUDING CORNERS AT EMERGENCY EXIT DOORS. GUARDS SUPPLIED BY PAN OLSTON, SEE VENDOR LIST.
- G. COORDINATE ALL MILLWORK ON DRAWINGS W/ ACME SHOP DRAWINGS.
- H. UPON POSSESSION OF THE PREMISES, DIMENSIONS OF SPACE SHALL BE VERIFIED. G.C. SHALL SUBMIT NOTED DISCREPANCIES TO THE ARCHITECT/ENGINEER, TENANT PROJECT MANAGER, AND REQUIRED VENDORS WITHIN 3 DAYS OF THE START OF CONSTRUCTION.
- I. WHEN RE-USING EXISTING DRYWALL CONSTRUCTION, PATCH AND REPAIR WALLS AS NECESSARY TO ENSURE REQUIRED RATING. PATCH ALL VOIDS INCLUDING DECK FLUTES WITH NON-COMBUSTIBLE MATERIALS.
- J. PATCH & FIRE STOP GYP. BD. PARTITIONS AS REQUIRED BY LOCAL CODES
- K. APPROVED FIRE EXTINGUISHERS SHALL BE FURNISHED AND INSTALLED BY GC AS REQUIRED BY LOCAL AUTHORITY.
- L. VERIFY TYPE OF FLOORING IN EACH ROOM WITH TMI CONSTRUCTION COORDINATOR.
- M. EXPOSED INSULATION AT "OPEN TO DECK" LOCATIONS SHALL BE COVERED WITH SCRIM SHEETS. SCRIM SHEETS TO BE PAINTED.
- N. EXISTING CONDITIONS TO REMAIN TO BE PATCHED, REPAIRED, SERVICED OR REPLACED TO BRING TO "LIKE-NEW" CONDITIONS, VERIFY WITH TUESDAY MORNING PROJECT MANAGER.

**PRODUCT SPECIFICATION**

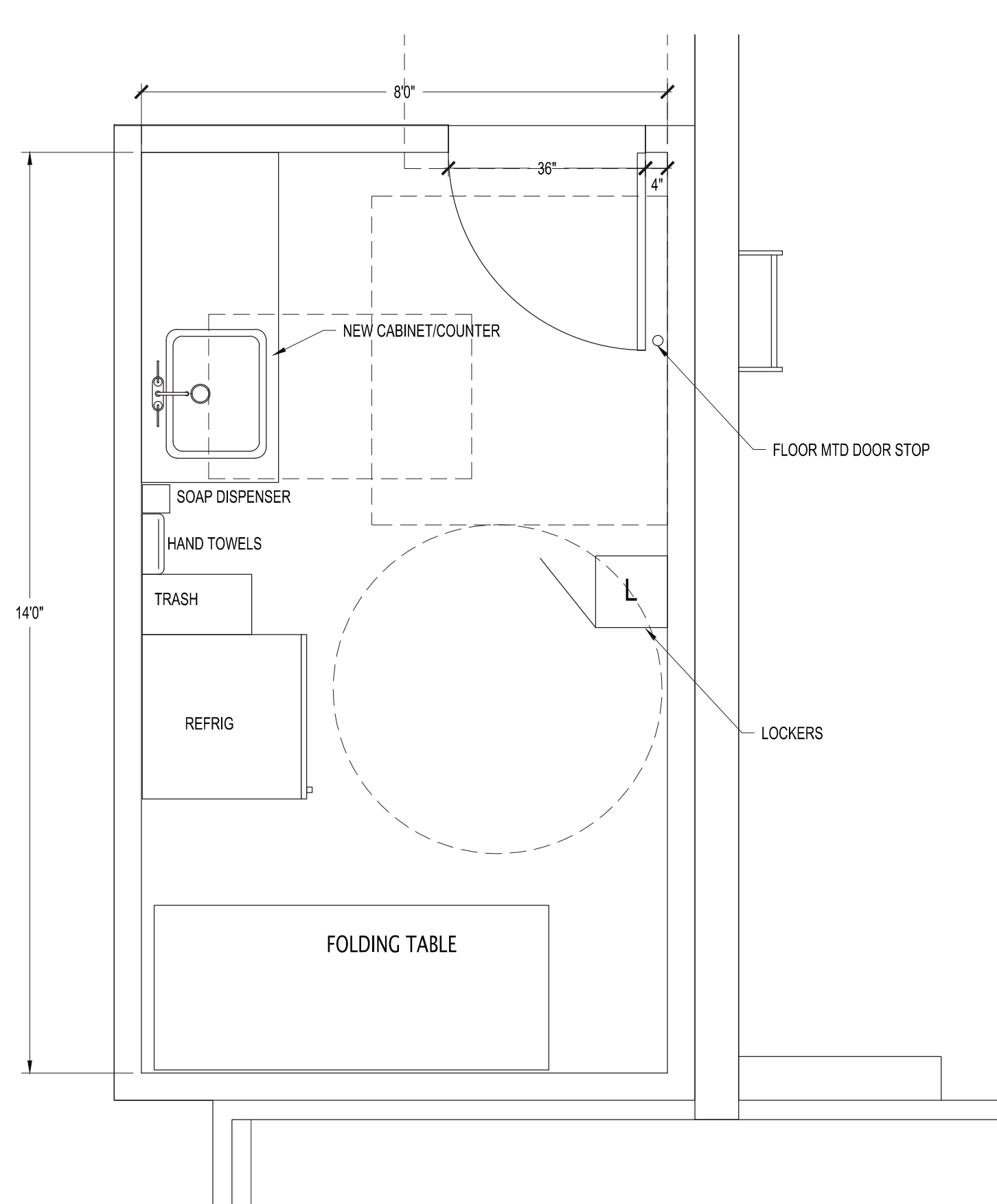
- 1. WHERE PRODUCTS ARE NOT INDICATED ON THE REQUIRED SUPPLIER LIST AND SPECIFIED ONLY BY REFERENCED STANDARDS, THE CONTRACTOR SHALL INSTALL ANY PRODUCT MANUFACTURER MEETING STANDARDS, DETAILS & DRAWINGS.
- 2. WHERE PRODUCTS ARE INDICATED ON THE REQUIRED SUPPLIER LIST AND SEVERAL MANUFACTURERS ARE SHOWN, THE CONTRACTOR SHALL CHOOSE ANY MANUFACTURER LISTED. ALTERNATES TO THE LIST ARE NOT ACCEPTABLE.
- 3. WHERE PRODUCTS ARE INDICATED ON THE REQUIRED SUPPLIER LIST AND ONLY ONE MANUFACTURER IS SHOWN, THE CONTRACTOR CAN USE ONLY THE MANUFACTURER LISTED. ALTERNATES TO THE LIST ARE NOT ACCEPTABLE. NO SUBSTITUTES WILL BE ACCEPTED.
- 4. NATIONAL PRICING CONTRACTS ARE IN PLACE WITH ALL OF THE VENDORS LISTED ON THE SUPPLIERS LIST. ALL CONTRACTORS TO SEND PLANS TO TUESDAY MORNING VENDORS. REQUIRED, VERIFY WITH EACH VENDOR, DRAWING SUBMITTAL PROCESS (ELECTRONIC, HARD COPY, ETC.)
- 5. ALL COST ASSOCIATED WITH THE USE OF VENDORS WILL BE AT THE SOLE COST OF THE CONTRACTOR OR SUBCONTRACTOR INCLUDING PURCHASE, DELIVERY, STORAGE, INSTALLATION, UNLOADING & ASSOCIATED REQUIRED WORK.
- 6. VENDORS LISTED ARE THE REQUIRED VENDORS IN ALL JURISDICTIONS. NO SUBSTITUTIONS UNLESS APPROVED BY TUESDAY MORNING.
- 7. G.C. AND SUBS ARE TO CAREFULLY FOLLOW THE INSTALLATION INSTRUCTIONS AS PROVIDED FROM EACH VENDOR.

**KEYED NOTES**

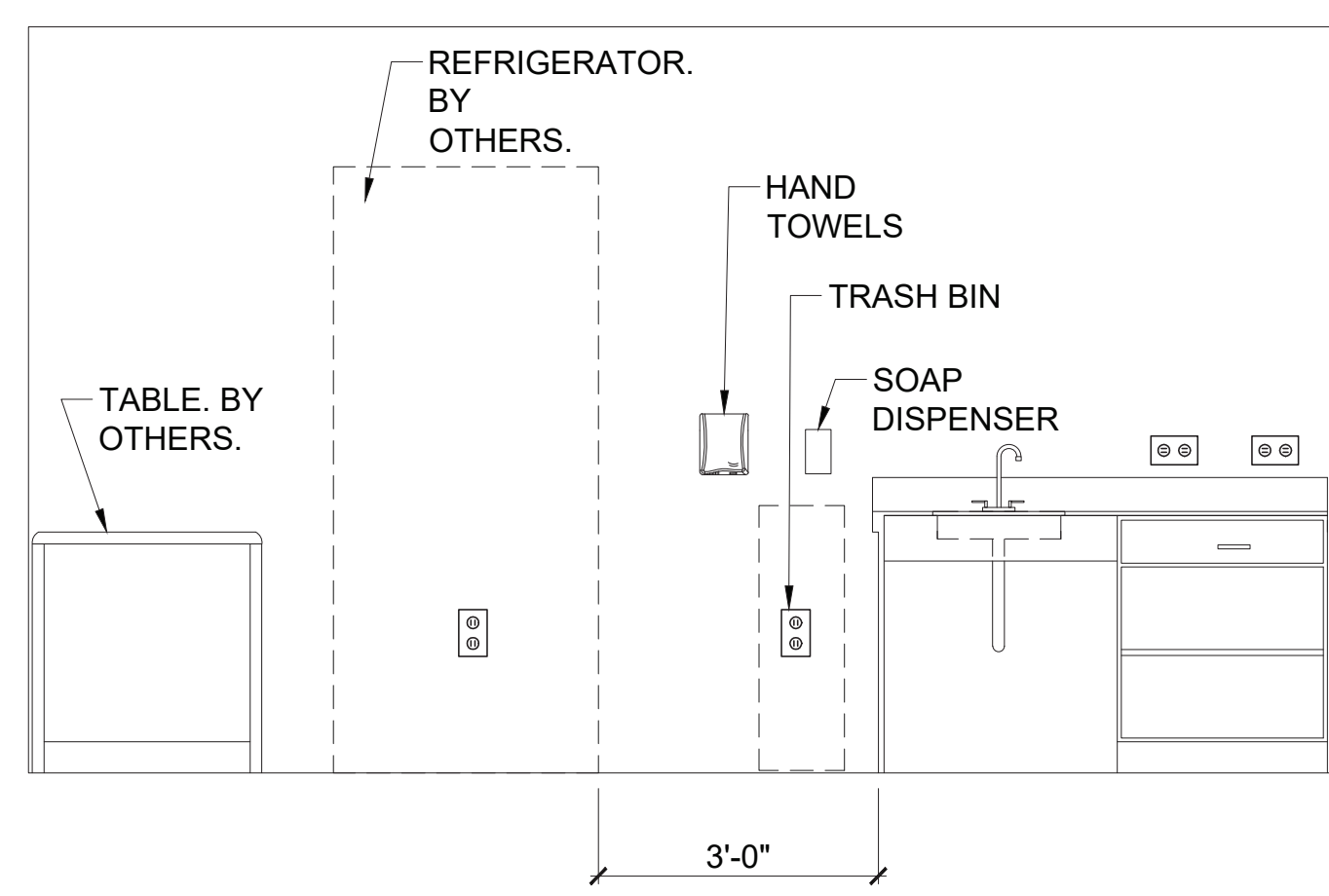
- 1. SALES AREA COLUMN(S) SHALL HAVE STAINLESS STEEL WRAPS REQUIRED. PAINT TYPE P2 TO BOTTOM OF STRUCTURE
- 2. G.C. TO ACQUIRE FIRE EXTINGUISHERS FROM TUESDAY MORNING'S VENDOR. MINIMUM REQUIREMENT IS TYPE 2A-10B-C (5LBS) PER 75'-0" OF TRAVEL OR 1 PER 3,000 S.F. OF BUILDING AREA. WHEN MOUNTING ADJACENT TO DOOR OPENING, MAINTAIN 12" CLEAR TO DOOR OPENING FOR ADA COMPLIANCE. FINAL LOCATION, MOUNTING HEIGHT AND QUANTITY BY FIRE INSPECTOR. GC TO VERIFY FIRE MARSHALL REQUIREMENTS FOR INSPECTION AND TAGGING. GC TO PROVIDE INSPECTION AND TAG IF NECESSARY.
- 3. SINGLE GANG BOX MOUNTED IN WALL ON STOREFRONT AT THIS LOCATION FOR KNOX BOX, IF REQUIRED BY LOCAL FIRE DEPARTMENT, G.C. TO VERIFY IF REQUIRED.
- 4. CLEAR & LEVEL LANDING @ FRONT ENTRANCE.
- 5. HILL PHOENIX SYSTEM. REF: ELECTRICAL DWGS.
- 6. PHONE/EMS BOARD, REF: ELECTRICAL DWGS.
- 7. PLAN TUBE HOLDER - REF: DET. 01/A2.0.
- 8. NEW FLOOR MOUNTED MOP SINK AND WATER HEATER.
- 9. G.C. TO INSTALL NEW TACTILE "EXIT" SIGN. REF: 2/G1.1.
- 10. G.C. TO INSTALL NEW TACTILE ADA ACCESSIBILITY "ENTRY" SIGN. REF: 2/G1.1.
- 11. G.C. TO INSTALL NEW TACTILE "EXIT ROUTE" SIGN. REF: 2/G1.1.
- 12. PROVIDE 4'-0" CLEAR AREA AT ELECTRICAL DISTRIBUTION LOCATION TO BE DESIGNATED BY 4" PAINT STRIPING ON THE FLOOR, PAINTED P6, AFTER POLISHING STOCKROOM CONCRETE FLOOR.
- 13. OVERHEAD DOOR.
- 14. ACCESS LADDER AND HATCH.
- 15. PROVIDE 3'-0" CLEAR AREA AT FIRE RISER LOCATION TO BE DESIGNATED BY 4" PAINT STRIPING ON THE FLOOR, PAINTED P6, AFTER POLISHING STOCKROOM CONCRETE FLOOR.
- 16. SPRINKLER RISER, VIF. COORDINATE CHECK VALVE & DRAIN DOWN LOCATIONS.
- 17. FIRE DEPARTMENT CONNECTION WHERE REQUIRED SHALL BE LOCATED WHERE INDICATED. VERIFY LOCATION WITH TUESDAY MORNING.
- 18. 5'-0" SQUARE, CLEAR, & LEVEL LANDING @ EXTERIOR DOORS.



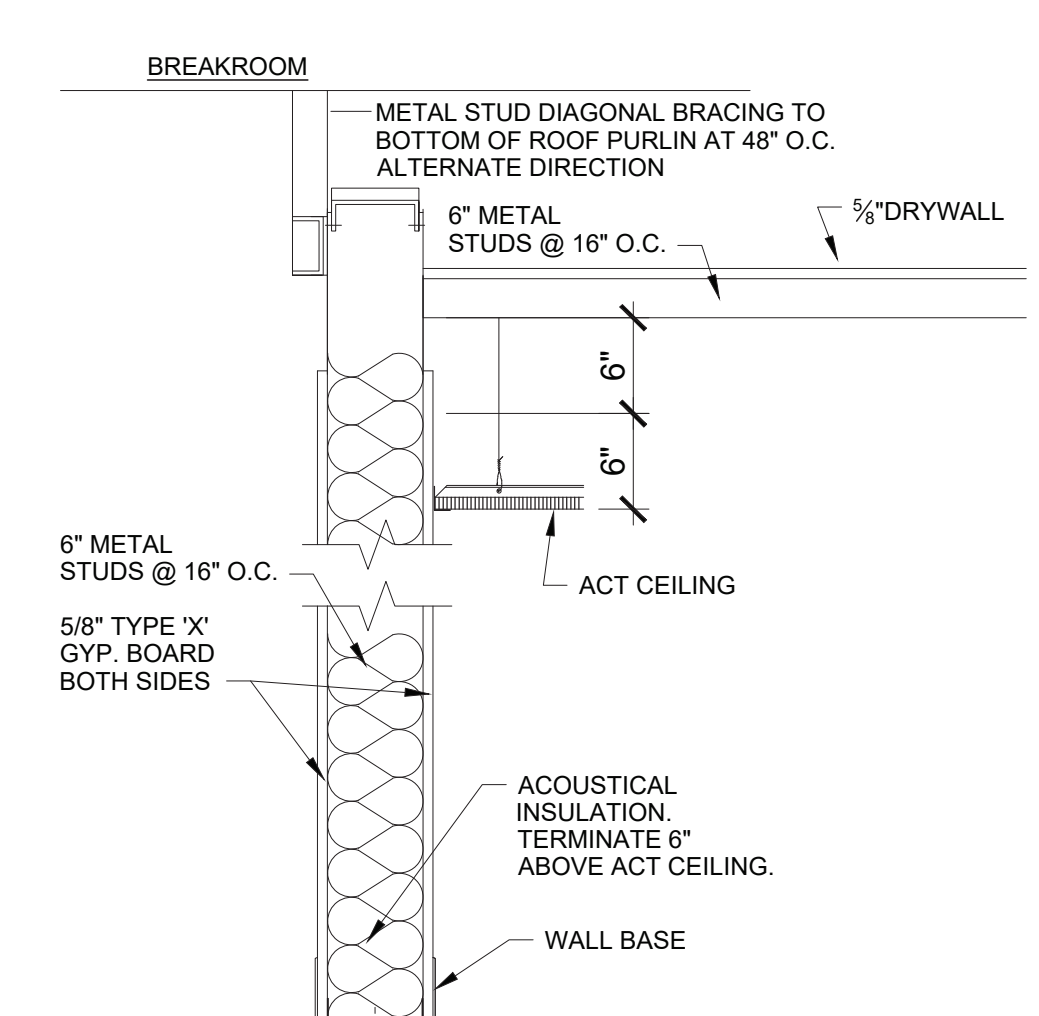
**FLOOR PLAN**  
SCALE: 1/8" = 1'-0"



**01 BREAKROOM ENLARGED FLOOR PLAN**  
SCALE: 1/2" = 1'-0"



**02 BREAKROOM WEST WALL ELEVATION**  
SCALE: 1/2" = 1'-0"



**03 BREAKROOM WALL SECTION**  
SCALE: 1" = 1'-0"

ISSUE DATE		
REVISION RECORD		
NO	DATE	COMMENTS / REVISIONS

**Tuesday Morning**  
SCOTTSDALE, ARIZONA

PROJECT NO. 18027-01
PROTOTYPE NO. 1811
DRAWN BY STAFF
SHEET TITLE COVER SHEET
SHEET NO. A1.0