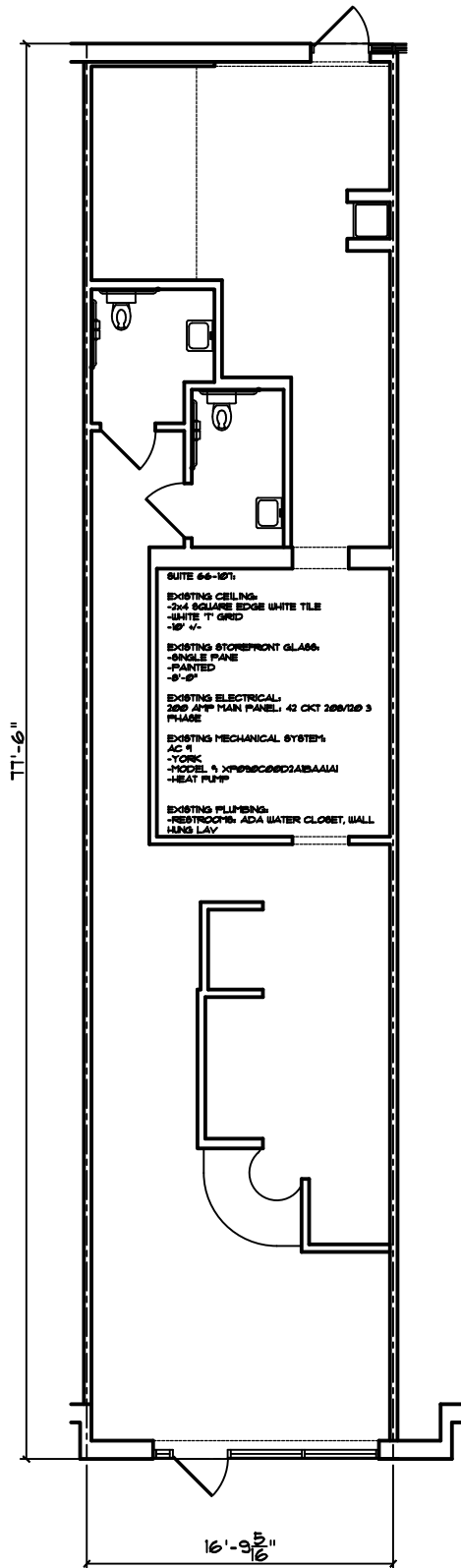


SUITE 66-107:

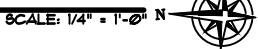
- EXISTING CEILING:
 - 2x4 SQUARE EDGE WHITE TILE
 - WHITE T' GRID
 - 12" x 12"
- EXISTING STOREFRONT GLASS:
 - SINGLE PANE
 - PAINTED
 - 8'-0"
- EXISTING ELECTRICAL:
 - 200 AMP MAIN PANEL: 42 CKT 200/120 3 PHASE
- EXISTING MECHANICAL SYSTEMS:
 - AC #1
 - YORK
 - MODEL # XPR9C0602A8AA1A1
 - HEAT PUMP
- EXISTING PLUMBING:
 - RESTROOM: ADA WATER CLOSET, WALL HANG LAV



SUITE 66-107:

- EXISTING CEILING:
 - 2x4 SQUARE EDGE WHITE TILE
 - WHITE T' GRID
 - 12" x 12"
- EXISTING STOREFRONT GLASS:
 - SINGLE PANE
 - PAINTED
 - 8'-0"
- EXISTING ELECTRICAL:
 - 200 AMP MAIN PANEL: 42 CKT 200/120 3 PHASE
- EXISTING MECHANICAL SYSTEMS:
 - AC #1
 - YORK
 - MODEL # XPR9C0602A8AA1A1
 - HEAT PUMP
- EXISTING PLUMBING:
 - RESTROOM: ADA WATER CLOSET, WALL HANG LAV

EAST VILLAGE AT SHEA
 SUITE: 66-107
 LOD PLAN
 AREA: 1301 SF



EAST VILLAGE AT SHEA
 SUITE: 66-107
 FLOOR PLAN
 AREA: 1301 SF

